



JULIOTS WELL

HOLIDAY PARK

**OPEN
ALL YEAR
ROUND!**



Juliots Well

a superb rural retreat set in 33 acres

Nestled between the moors and the spectacular coastline Juliots Well is a mile from the ancient town of Camelford – once part of a medieval trading route – and just four miles from the beach at Trebarwith Strand with its dramatic cliffs, dark caves, rock pools and fine sands. Tintagel – the legendary site of King Arthur's Castle and the picturesque harbours of Boscastle and Port Isaac are within easy reach – together with Bodmin Moor and its Jamaica Inn, made famous by Daphne Du Maurier.

An ideal touring base for all of Cornwall – England's most westerly point, Land's End is a little over 90 minutes drive away and Sir Francis

Drake's Plymouth only an hour just beyond Cornwall's eastern boundary.

Juliots Well is a family-run holiday park where the resident owners and their dedicated team offer a personal friendly service in an informal and relaxed atmosphere. Set in beautiful woodlands with extensive views across some of the finest Cornish countryside the holiday park is ideally located in an area of outstanding natural landscape.

The Well itself, dating from medieval times, was a welcome resting place for pilgrims and is still noted for its holy waters.

Travellers from bygone days recognised that the feeling of calm gained from resting in these quiet surroundings could be very beneficial... and today's visitors have discovered this too!

You'll enjoy the totally relaxed and informal freedom of the 33 rolling acres of sheltered parkland and shady woods, hedgerows and wet grassland – the latter containing unusual species of wild flowers, grasses and wildlife.

At the boundary edge runs a clear stream together with unobtrusive picnic areas scattered around the park ensuring a quiet spot can always be found.

Excellent facilities for all guests

- Fly and float fishing lake
- Outdoor heated swimming pool (open mid May - mid Sep)
- Large attractive 'Coach house' bar including Sky Sports with large screen TV. There is also a separate dog friendly eating area
- Varied entertainment programme selected weeks during the season
- Pilgrims Restaurant with a range of home cooked food using fresh and local produce
- Cornish breakfast served daily
- Half board can be pre-booked for all or half of your holiday duration
- Sun patio with 'al fresco' eating, plus lawned area with picnic tables
- Level playing field and a children's play area
- Games room with pool table and machines
- Shop providing newspapers and daily basic essentials
- Launderette
- Free car parking
- Wi Fi available in Coach House
- In addition, within easy reach of the park you'll find a wide range of sporting and leisure activities from windsurfing to pony-trekking, and cycling to abseiling!

Superb choice of accommodation

- Choose from a wide range of timber lodges – some with hot tubs – stone built cottages or static caravans
- Touring park with electric hook-ups and a bath and shower block



Cornwall...a land for all seasons

A mystical Kingdom... unspoilt and unsurpassed with such diverse beauty to delight the visitor. Under the warming influence of the Gulf Stream, Cornwall enjoys a mild year-round climate and is truly a land for all seasons.

A relaxing retreat... ideal for year-round breaks and where you can explore at your own unhurried pace.

Surrounded by sea on three sides...

Cornwall has more coastline than any other county in England. Awesome granite cliffs of the Atlantic coast tower above magnificent golden beaches, providing a vivid contrast to the many secluded bays, coves and quaint fishing harbours of the more sheltered south.

A land of heritage and legend... Cornwall's Celtic roots abound with stone circles, wayside crosses and holy wells scattered throughout the county. Ships in their hundreds foundered on the rocks and then of course, there's the legend of King Arthur with Merlin's cave at Tintagel.

A year-round wonderland of plant life...

Surely unsurpassed within the British Isles Cornwall boasts a wealth of flora. Past-century explorers brought exotic species to these shores from around the world which now thrive all over the county.

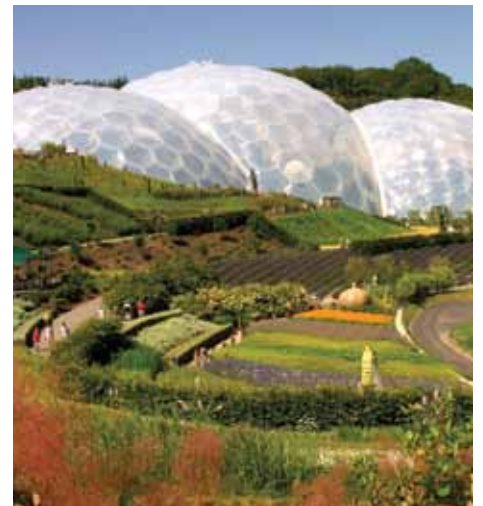
A paradise for artists... With such rich and diverse scenery no wonder artists have drawn inspiration from the landscape, with The Tate at St Ives encapsulating the mood.



This map shows just a selection of places to visit. Details of other attractions and more information on the places and activities mentioned in this brochure are available from reception

Key places featured on the map

- 1 Lands End Family Adventure Park and Legendary Last Labyrinth.
- 2 St Michael's Mount which can be reached by foot at low tide.
- 3 Paradise Park Wildlife Sanctuary – the world of birds and animals.
- 4 Flambards theme park – plenty to see and do for all the family!
- 5 Trebah Garden – one of the eighty finest gardens in the world.
- 6 The National Seal Sanctuary – a great day out!
- 7 The National Maritime Museum – an impressive display of seacraft.
- 8 Lappa Valley Steam Railway – travel on three narrow gauge lines!
- 9 Springfields Fun Park and Pony Centre.
- 10 Crealy Great Adventure Park with rapids, log fumes and more.
- 11 The Lost Gardens of Heligan – Europe's largest garden restoration project.
- 12 The Charlestown Shipwreck and Heritage Centre.
- 13 The Eden Project – a vast living theatre, or 'dramatic global garden'.
- 14 Bodmin & Wenford Railway – relive the days of steam!
- 15 Tintagel Castle.
- 16 Lanhydrock. Magnificent country house.
- 17 Jamaica Inn and museum.
- 18 Killarney Springs, 66-acre family park with over 20 different activities.



**OPEN ALL
YEAR ROUND!**

Luxury Lodge Range

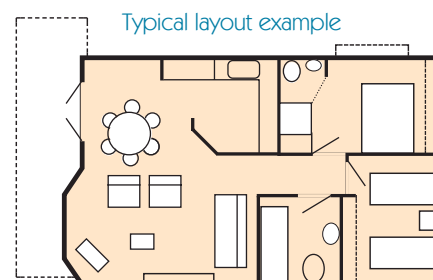
Pine lodges, all with their own verandah

These spacious two bedroom holiday lodges are in a quiet area of the park, many offering delightful views of the UK Cornish countryside.

There are three grades of luxury holiday lodges to choose from, each providing a comfortable

base from which to explore the beautiful local area.

Each lodge is centrally heated and double glazed throughout and has its own verandah with patio furniture.



Camellia Lodges

Our top of the range lodges are the largest and most spacious of our models. They are well appointed throughout with furnishings and equipment to 4 star standards including king size beds.



Camelia features

- 2 bedrooms, one double en suite with shower and one twin, both with tv and dvd player
- Separate bathroom with bath, shower attachment and toilet
- Lounge with widescreen tv plus dvd player and double sofa bed. Separate dining area
- Fully fitted kitchen with oven and hob, microwave, fridge, freezer, dishwasher, iron and board plus a wide range of utensils
- All beds are made up for your arrival, plus towels and tea towels included
- All electricity and heating included
- Hair dryer
- Smoke and carbon monoxide alarms
- Guaranteed parking
- Double en suite bedroom has patio doors leading to a small veranda
- Hot tub (VIP only)



Azalea Lodges

These large spacious 2 bedroom lodges are well appointed throughout with furnishings and equipment to 4 star standards.



Azalea features

- 2 bedrooms, one double en suite with shower and one twin
- Separate bathroom with bath, shower attachment and toilet
- Lounge with tv plus dvd player. Separate dining area
- Fully fitted kitchen with oven and hob, microwave, fridge, iron and board plus a wide range of utensils
- All beds are made up for your arrival, plus towels and tea towels are included
- All electricity and heating included
- Hair dryer
- Smoke and carbon monoxide alarms
- Guaranteed parking



Jasmine Lodges

The smallest of our lodges are well appointed throughout with furnishings and equipment to 4 star standards.



Jasmine features

- 2 bedrooms one twin and one double
- Shower room and toilet
- Lounge with tv plus dvd player. Separate dining area
- Fully fitted kitchen with oven and hob, microwave, fridge, iron and board plus a wide range of utensils
- All beds are made up for your arrival, plus towels and tea towels are also included,
- All electricity and heating included
- Hair dryer
- Smoke and carbon monoxide alarms
- Guaranteed parking

**OPEN ALL
YEAR ROUND!**

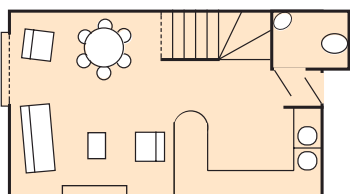
Cornish Cottages

...a select development of stone-built cottages

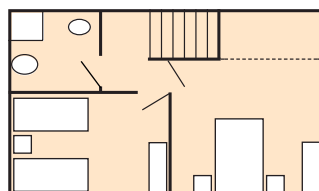
A select development of five two bedroom stone-built cottages, with a very high specification throughout. Each has full central heating, double glazing and an enclosed patio area with garden furniture.



Ground Floor



First Floor



Excellent facilities

2 bedroom:

- 2 bedrooms (1 double, 1 twin) and a bathroom with shower, wash basin, toilet, hair dryer and shaver point
- Separate cloakroom
- Lounge with wall-mounted flat screen tv and selected satellite channels plus dvd player, a double sofa bed (in selected units) and log fire
- Separate well-equipped kitchen and dining area with cooker, microwave, dishwasher, fridge, freezer, washing machine/tumble dryer, iron and board - plus a wide range of utensils.
- All beds made up for your arrival, plus towels and tea towels included
- All electricity and heating included
- Private parking
- Smoke alarms
- Private enclosed patio
- A hot tub available (selected model)

3 bedroom:

- Detached, luxury holiday cottage. This superb detached cottage has been finished to the highest standards
- Parking for 2 cars
- Large outdoor area and terrace
- Master bedroom with king sized bed and ensuite shower room
- Two further twin bedrooms with zip 'n' link beds (can be doubles if you wish)
- Family bathroom with shower
- A fully equipped kitchen with a dishwasher, fridge, freezer and washing machine
- Spacious open plan lounge and dining area
- Lounge has large flat screen TV

Caravan Holiday Homes

...a wide range of static holiday caravans

A choice of two grades of well equipped static caravans offering a wide range of accommodation to satisfy the requirements of most guests in terms of quality, size and price. These are located in a selected eight-acre part of the park sited on split levels in areas surrounded by mature trees.

**4 STAR
HOLIDAY PARK!**

The Maple

These large units are 20% wider than our other caravans with a choice of 6 or 8 berth models all of which enjoy the same lounge/diner and kitchen space, and all with dvd player.

The 6 berth has one bathroom that serves as an en suite for the double bedroom or, with its additional door, is also for communal use.

The Beech

Very comfortable units with a choice of 6 or 8 berth models all with generous lounge/diner and kitchen space.



Excellent facilities

Whichever grade of caravan you choose, Beech or Maple, they all include the following:

- Verandah plus patio furniture (on selected models)
- Bathroom with private shower, toilet and washbasin
- Well-equipped kitchen with fridge, microwave, gas cooker and a wide range of crockery and cutlery
- Lounge/diner with gas fire and tv with selected satellite channels, a pull-out double sofa bed
- FREE gas and electricity and bedding. Beds made up for your arrival
- Plus free parking
- Bedrooms Irrespective of grade all 6 berth models have one double bedded room plus one twin, all 8 berth models have an extra twin bedroom. All 6 and 8 berth models have a pull-out double sofa bed in the lounge

Please note: Towels and tea towels are NOT provided.

**OPEN ALL
YEAR ROUND!**

Touring and Camping

...with a wide range of modern facilities

Our spacious terraced touring park enjoys delightful panoramic views across the wooded valley and has a total of 39 individual pitches, each 9 metres x 9 metres – all with electric hook-ups and generously spread over 2 deep terraces with parking alongside.

The touring park was completed in Autumn 2007 and has since undergone an extensive shrub planting programme to further enhance the area.

Tourers are permitted to use all the amenities the park has to offer including the swimming pool, games room, restaurant and the Coach House bar which has Sky Sports with large screen.

Excellent facilities for all guests

- Electric hook-ups alongside each pitch
- There is a new timber-framed unisex facility block providing washing facilities with free private showers, toilets and washbasins
- There is a private bathroom accessed by tokens (available at reception/bar), payable locally
- There is space for one car per pitch and additional parking available at no extra charge
- Dogs are allowed on site, maximum 2 per pitch at £2.50 per dog per night
- Shower unit includes a disabled shower room
- Check in/Check out Check-in from 1pm, please vacate by 11am



Christmas and New Year

...in a delightful country setting

Enjoy a magical Christmas or New Year in a delightful rural setting with us here at Juliot's Well. Stay in a lodge, cottage and enjoy Christmas lunch in the Pilgrims Restaurant.

We also have special New Year breaks on offer where the celebrations include a New Year's Eve buffet complete with live entertainment. The following day relax and enjoy our New Year's Day brunch.

We are open all year including the pub and restaurant.

All our pine lodges and cottages are central-heated and there is full access to all the site's facilities (except the swimming pool).

Juliot's Well makes an excellent touring base from which to explore Cornwall which takes on a magical feel during the festive season.



Out and about...

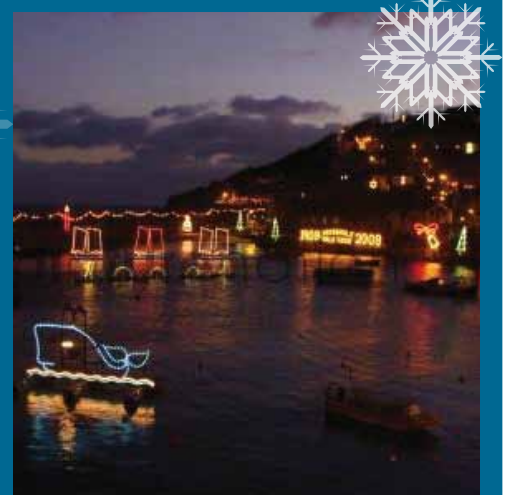
Christmas in Cornwall is always popular. It may not be warm and sunny but the scenery never fails to impress, especially if it snows when the countryside is brought to life. Cornwall's towns always embrace the Christmas spirit by having plenty of events and activities for all the family.

The Eden Project has several festive events including lantern walks and ice skating, while the equally popular Trebah Gardens boasts candlelit evening walks, santa trails and a grotto.

Many resorts feature delightful displays of Christmas lights with Mousehole, near Penzance, renowned for its impressive illuminations which extend out to sea. There are a host of warm and inviting pubs, bars and restaurants to visit as well as candlelit carol services and Midnight Mass for those who wish to worship.

Please note most attractions are closed on Christmas day and Boxing Day.

Please ask for details, we will be happy to assist in any way we can.



**OPEN ALL
YEAR ROUND!**

Functions

Let us host your Wedding, Birthday, Christening and more!

We are able to provide facilities for all manner of functions from christenings wedding receptions, conferences and parties.

We offer a very good discount on accommodation for party guests to enable them to fully enjoy the function.

We are licensed to carry out civil ceremonies. We are here to look after your every need on your big day Juliot's Well provides a beautiful relaxing setting for your special event.

Steeped in history this romantic setting offers everything for the wedding party. You can spend your honeymoon here on the park

and take advantage of the facilities and use the park as a touring base. We will guide you through every step of your function from your first enquiry right through to the end of your celebrations. Our wedding menus can be tailored made to suit your needs.



Trout, Fly and Float Fishing

...on Pilgrims Lake at Juliot's Well

You can now enjoy special Fishing Breaks at Juliot's Well.

Set in beautiful and tranquil surroundings the spring-fed 0.75 acre Pilgrims Lake is well - stocked including Rainbow Trout up to 12lbs in weight. It offers both amateur and the more experienced fishermen/women an excellent experience.

Rod hire and bait are available on site as well as full gutting facilities.

Fishing Licenses can be purchased from Camelford Post Office.

We are also able to offer float and Fly fishing tuition, details and prices available on request.

**OPEN ALL
YEAR ROUND!**



Other breaks are also available
– details on request.

Enjoy your very own lodge at Juliots Well



Lodge prices now starting from only £49,995

- Site fees, rates and insurance included for up to 2 years
- Fully managed sub-let scheme with guaranteed bookings for 2 years



For more information please call Richard on:

08458 338909

* Finance subject to status, terms and conditions apply, written details available on request.

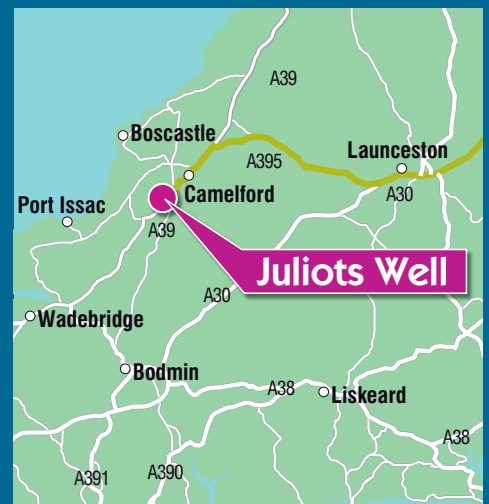
How To Find Us

By Road

Follow the A30 from Exeter. By-passing Launceston, turn right on to the A395. Turn left onto the A39 to Camelford. Quarter of a mile beyond the town (just after the sign for Valley Truckle) turn right onto the B3266 and then second left on sharp bend, signposted Juliots Well and we are 300 yards along on the right.

By Public Transport

- Rail/coach The nearest station is Bodmin Parkway, around 15 miles away.
- Air Newquay Airport is 23 miles away and there are daily services from Gatwick and Stansted airports plus services from other UK departure points. Car hire can be arranged from the airport.



Where to book

Juliots Well Holiday Park:

Camelford, North Cornwall, PL32 9RF

For reservations and general enquiries:

Telephone: 01840 213302

Fax: 01840 212700

Website: www.juliotswell.com

E-mail: holidays@juliotswell.com

**ONLINE
BOOKING
ALSO
AVAILABLE!**

